

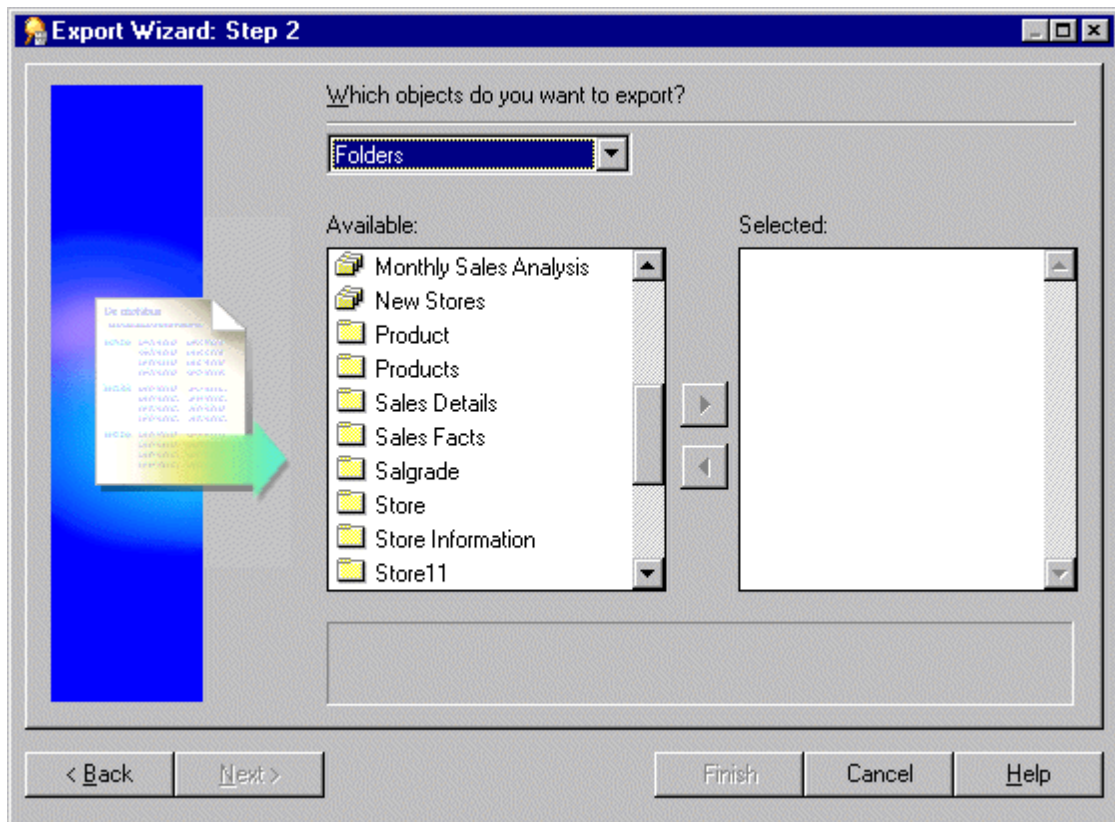
How to export selected EUL objects using the Export Wizard

Use this option when you want to use the export file to update an existing EUL with selected EUL objects. For example, when applying a minor change to a production business area.

To export the selected objects using the Export Wizard:

1. Choose File | Export to display the ["Export Wizard Step 1 dialog"](#).
2. Select the Selected Objects in the End User Layer option and click Next to display the ["Export Wizard: Step 2 dialog \(to export selected objects\)"](#).

Figure 1 Export Wizard: Step 2 dialog



3. Use the Which objects do you want to export? drop down list to display the EUL object types that you want to export to a file.

For example, folders, item classes and item hierarchies.

Note: If you select a business area above, Discoverer exports just the definition of the business area and not its folders and items. To export business area folders and items you need to select them explicitly.

How to export selected EUL objects using the Export Wizard

4. Move the object that you want to export from the Available list to the Selected list.
You can select more than one object at a time by holding down the Ctrl key and clicking another object.
5. Click Next to display the ["Export Wizard: Step 2 dialog \(to export selected business areas\)"](#).
6. Click Browse to display the Save As dialog.
This enables you to browse for a location to save the export file.
7. Enter a suitable name for the exported objects.
8. (optional) Select the Generate XML for exported workbooks check box to save any workbooks in XML format.
Note: The export file (*.EEX) is always in XML format but workbooks by default are saved inside it as a binary to save space and time. Select this check box to save the workbook definitions additionally as XML inside the export file.
9. (optional) Select the Save export commands as a text file (*.txt) check box to save the export commands that created this export to a text file.
This creates an additional text file containing the commands used to create this export and applies the extension .txt. This file can then be used in conjunction with the command line interface (for further information about the command line interface, see [Chapter 22, "Oracle Business Intelligence Discoverer command line interface"](#)).
10. Click Finish to create the export file (and any additional files selected) in the specified location and display the Export Log.

Figure 2 Export Log dialog



How to export selected EUL objects using the Export Wizard

The Export Log displays information about what has been exported.

11. (optional) Click Save to specify a name and location to save the Log file.
12. Click Close to finish.

How to export selected EUL objects using the Export Wizard

Change History

Date	Description	Changed By
February 3, 2012	Initial Document	jong
November 7 2012	Reformatted Using UI Template	Tim Haight