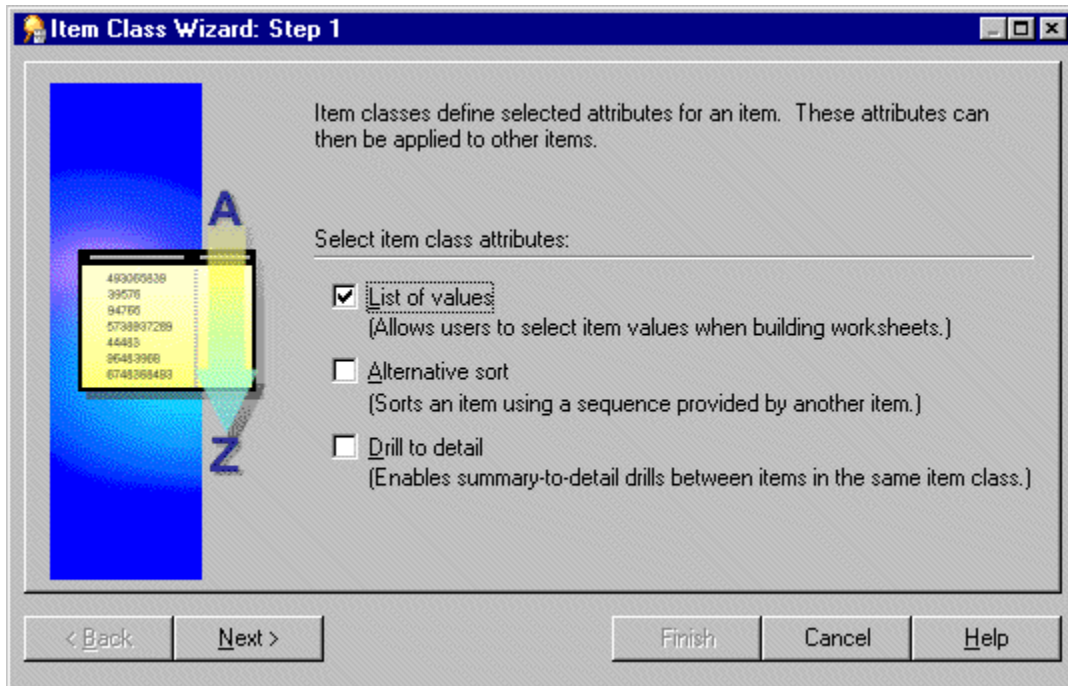


To create a LOV item class:

1. Choose Insert | Item Class to display the "Item Class Wizard: Step 1 dialog".

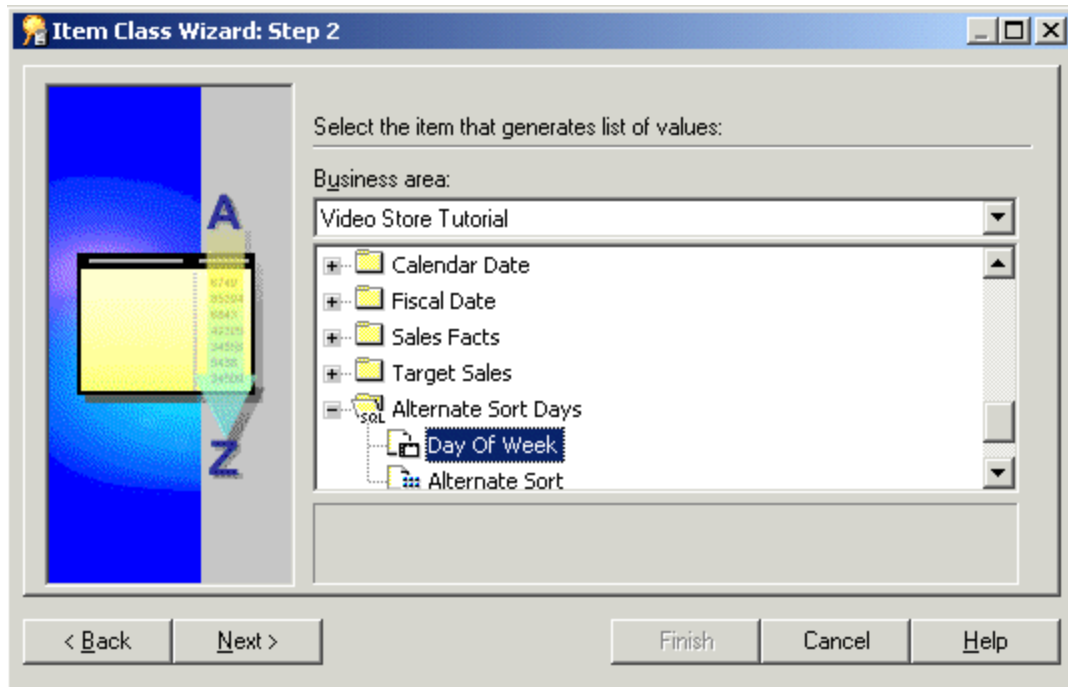
If Discoverer displays the "Item Class Wizard: Step 2 dialog (select the item that generates the LOV)" press the Back button.

**Figure 9-2 The Item Class Wizard dialog**



**Figure 1 Item Class Wizard: Step 1 dialog**

2. Select the **List of Values** check box.
3. Click Next to display the "Item Class Wizard: Step 2 dialog (select the item that generates the LOV)".



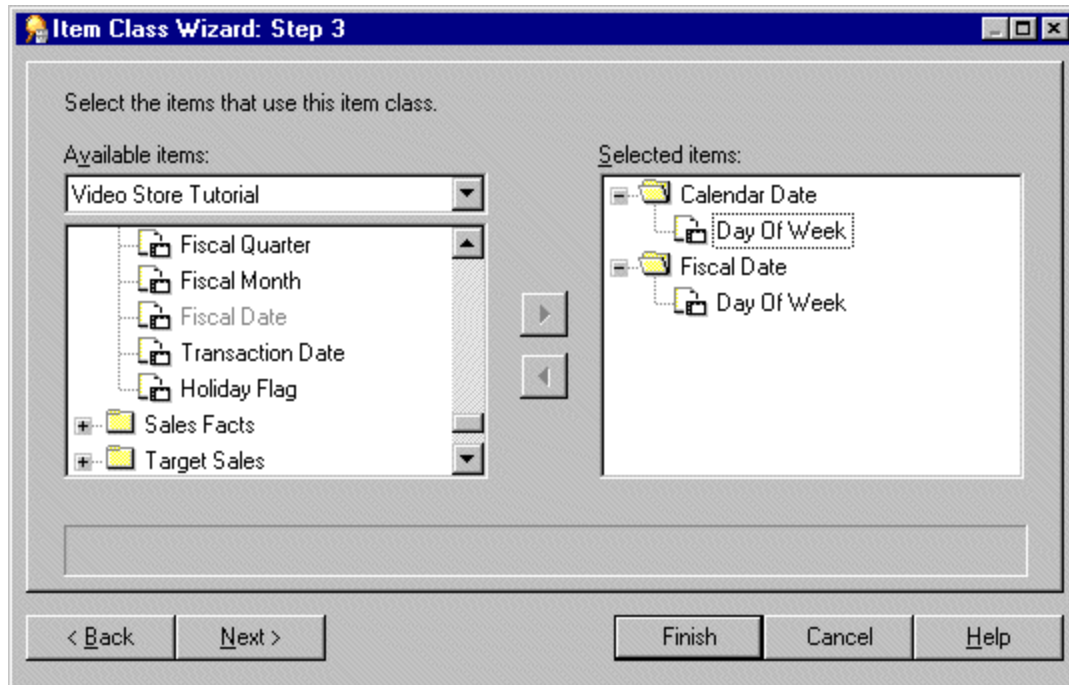
**Figure 2** Item Class Wizard: Step 2 dialog

4. Select the business area that contains the item you want to use to generate the list of values from the drop down list.
5. Select the item that you want to use to generate the list of values.

**Note:** By default, Discoverer uses a SELECT DISTINCT query to retrieve a list of values. If you select an item in a folder with a large number of rows compared to the number of distinct values, then the query can be inefficient. It is more efficient to select an item from a smaller table (joined to the folder with a large number of rows) rather than using the large table itself. If a smaller table does not exist, it might be worth creating it to speed up the list of values process.

Alternatively if you have a small number of values, use a custom folder to create a local list of values within the End User Layer. For more information, see ["How to create a list of values using a custom folder"](#).

6. Click Next to display the ["Item Class Wizard: Step 3 dialog \(select items that use this item class\)"](#).



**Figure 3** Item Class Wizard: Step 3 dialog

**Note:** If you had also selected the **Drill to detail** check box on the first page of the Item Class Wizard, end users will be able to drill between any of the items that you select on this page.

7. Move the items that use this item class, from the **Available items** list to the **Selected items** list.
8. Click Next to display the ["Item Class Wizard: Step 4 dialog \(advanced options for list of values\)"](#) to specify options controlling how LOVs are selected and displayed in Discoverer Plus.

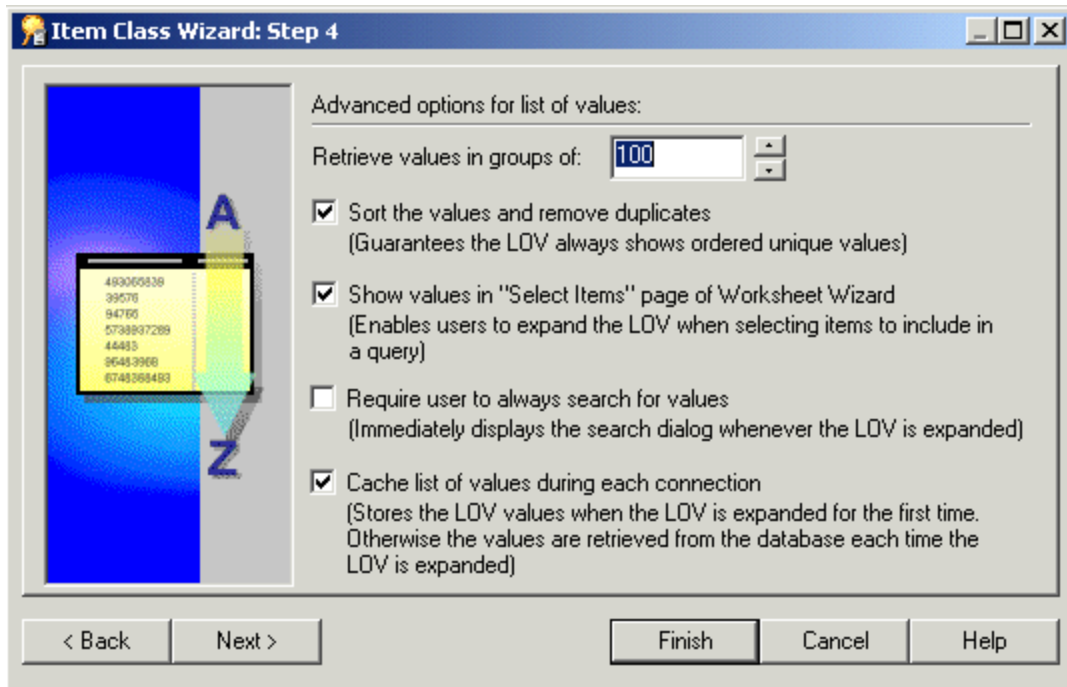


Figure 4 Item Class Wizard: Step 4 dialog

9. Specify the number of values to retrieve in each group, and select other check boxes as required.
10. Click Next to display the "Item Class Wizard: Step 5 dialog (enter name and description)" and specify a name and description for the new item class.

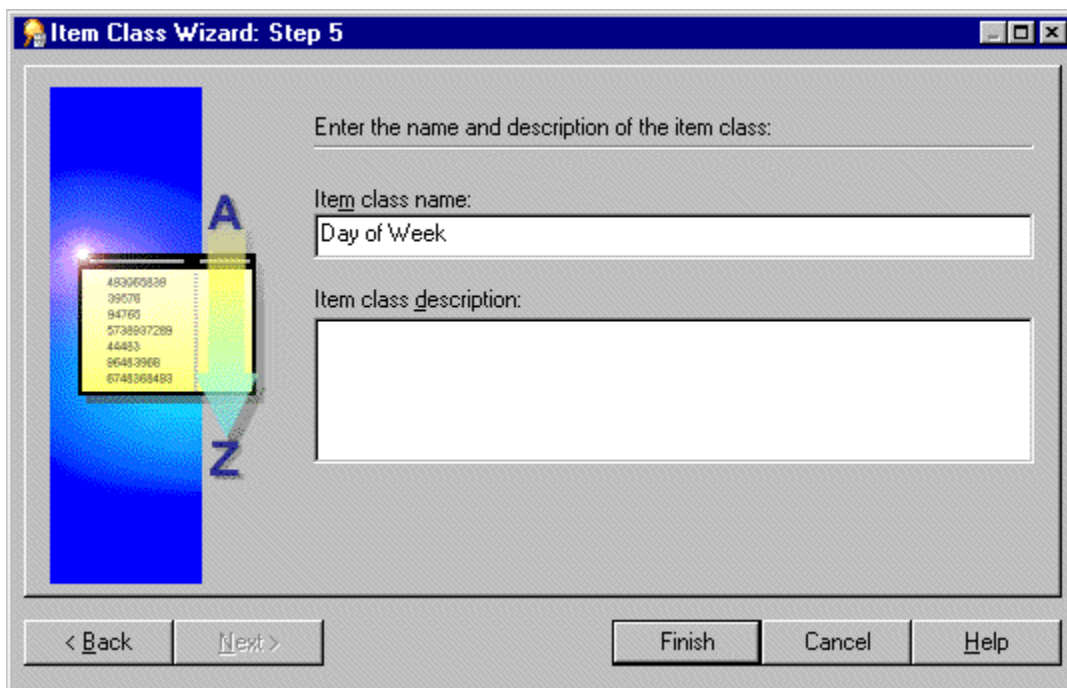


Figure 5 Item Class Wizard: Step 5 dialog

11. Enter a name and description for your new item class.
12. Click Finish.

**Change History**

<b>Date</b>	<b>Description</b>	<b>Changed By</b>
April 23, 2010	Initial Document	Jong
November 7, 2012	Reformatted using U of I template	Tim Haight